

# ANTI-BULLYING PLAN 2023

## Illawong PS

Bullying behaviour has three key features. It involves the intentional misuse of power in a relationship. It is ongoing and repeated, and it involves behaviours that can cause harm. The NSW Department of Education requires all NSW public schools to have an Anti-bullying Plan which details the strategies implemented to reduce student bullying behaviours.

### Resources

The NSW anti-bullying website (see: <https://antibullying.nsw.gov.au/>) provides evidence-based resources and information for schools, parents and carers, and students. Schools are encouraged to visit the website to support whole-school prevention, early intervention and response approaches and strategies for student bullying behaviour.

### Illawong PS's commitment

Our school rejects all forms of bullying behaviours, including online (or cyber) bullying by maintaining a commitment to providing a safe, inclusive and respectful learning community that promotes student wellbeing. Executive staff are committed to establishing evidence-based approaches and strategies that promote a positive climate where bullying is less likely to occur.

## 1 School culture and inclusion

All members of the school community are active participants in building a welcoming school culture that values diversity and fosters positive relationships. A key component of a supportive school culture is building respectful relationships and an ethos that bullying is not accepted, in both online and offline environments. School staff will actively respond to student bullying behaviour.

Our school engages in the following practices to promote a positive school culture.

### 1.1 Student assemblies

Student bullying and expectations about student behaviour will be discussed and information presented to promote a positive school culture where bullying is not accepted.

Dates	Communication topics
Feb/Term 1	PAX good behaviour system implementation, National Day against Bullying with the focus on Kindness. Open Parachute.
Term 2	Behaviour code with students, including the token system for identifying respectful, responsible learners on the playground.
Term 3	Understanding emotional regulation
Term 2/Term 3	Five Ways to Wellbeing - proactive principles for the whole school community.

## 1.2 Staff communication and professional learning

Staff will be supported with professional learning that provides evidence-based ways to encourage and teach positive social and emotional wellbeing and discourage, prevent, identify, and respond effectively to student bullying behaviour.

**Every term in 2023**, there is a focus on the Anti-bullying component of the PDHPE syllabus.

Dates	Communication topics and Professional learning
Term 1 2022	PAX Good Behaviour Game outline and implementation and Open Parachute
Term 2 2022	PAX revisiting and consolidation
Term 3 2022	Understanding Emotional regulation from a sensory perspective; Brain, Body, Belonging.
Term 4 2022	Five Ways to Wellbeing; umbrella proactive engagement for all school community.

## 1.3 New and casual staff

New and casual staff will be informed about our school's approaches and strategies to prevent and respond to student bullying behaviour in the following ways.

Induction into the school includes an overview of the PAX Good behaviour game strategies and techniques designed to promote engagement in learning in the classrooms.

and describe how new and casual staff will be informed about the school's approaches and strategies to prevent and respond to student bullying behaviour, when it does occur. For example:

- information is provided in an Induction booklet to staff when they enter on duty at the school
- an executive staff member speaks to new and casual staff when they enter on duty at the school
- the principal speaks to new executive staff when they enter on duty at the school, as part of the induction process.

## 2 Partnerships with families and community

Effective schools have high levels of parental and community involvement. This involvement is strongly related to improved student learning, attendance and behaviour. Our school proactively builds collaborative relationships with families and communities to create a shared understanding of how to support student learning, safety and wellbeing.

### 2.1 Website

Our school website has information to support families help their children to regulate their emotions and behaviour and develop socially. Information is provided to assist if children have been involved in bullying behaviour (as the person engaging in bullying behaviour, as the person being bullied or as the person witnessing the bullying behaviour).

The following are published on our school's website. Check the boxes that apply.

School Anti-bullying Plan       NSW Anti-bullying website       Behaviour Code for Students

## 2.2 Communication with parents

Our school will provide information to parents to help promote a positive school culture where bullying is not acceptable and to increase parent’s understanding of how our school addresses all forms of bullying behaviour.

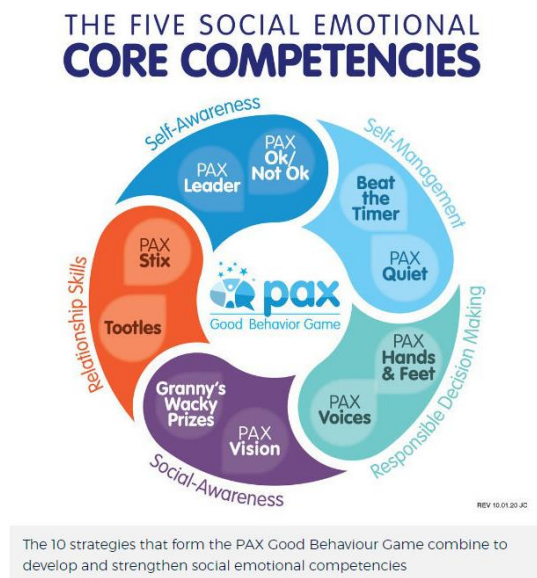
Dates	Communication methods and topic
Term 2 2022	P&C meeting May 18th - Defining student bullying and school supports such as the token system and reward systems.
Term 3 2022	Open Parachute parent information evening, Newsletter, Website and Term 3P&C meeting
Term 4 2022	Newsletter, Website and Term 4 P&C meeting, with whole school assemblies.

## 3 Support for wellbeing and positive behaviours

Our school’s practices support student wellbeing and positive behaviour approaches that align with our school community’s needs.

Social and emotional skills related to personal safety, resilience, help-seeking and protective behaviours are explicitly taught across the curriculum in Personal Development, Health and Physical Education (PDHPE).

Examples of other ways our school will embed student wellbeing and positive behaviour approaches and strategies in practices include the following.



Completed by: Sarah Hillyer

Position: Principal

Signature:

Date:04/05/2023

Principal name:

Signature:

Date: